

Exhibit Details

2004 Mid-America Conference
Sunday, May 2nd – Tuesday, May 4th

EXHIBIT BOOTH

The following items come with each exhibit registration:

- 10' x 10' piped and draped booth
- 8' draped table
- two chairs
- wastebasket
- identification sign
- contact information for *all* conference participants
- listing as exhibitor in the conference program with organizational information provided
- breakfast and lunch on May 3 & 4

The following items may be obtained for an additional cost by contacting either exhibit co-chair:

- electrical outlet - \$25
- telephone line - \$25
- additional table/double booth - \$150

DOOR PRIZES / DRAWINGS

A general drawing will take place on Tuesday, May 4th. We encourage everyone to participate by donating a door prize and plan on collecting donated items during set-up on Sunday, May 2nd.

If you wish to conduct your own drawing at your booth, please feel free to and we will gladly announce the winner during the announcement of the general drawing winners unless you prefer otherwise.

CONTACT INFORMATION

Exhibit Questions

If you have any questions regarding exhibiting at the 2004 Mid-America Conference, please contact either exhibit co-chair:

Allison Abplanalp
785.845.3554
allison@kac.org

Cathy Boyer-Shesol
913.341.6200 x16
cboyershesol@mwdg.org

Payment and Registration

All payments and registration forms of any kind should be sent to the chapter office at:

AFP Mid-America Chapter
PO Box 32101

FAX: (913) 422-2082

*Discovering New Roads
in Fundraising*

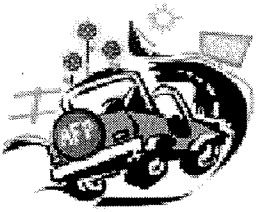


Exhibit Details

2004 Mid-America Conference
Sunday, May 2nd – Tuesday, May 4th

Reardon Convention Center
520 Minnesota Avenue
Kansas City, Kansas
913.342.7900

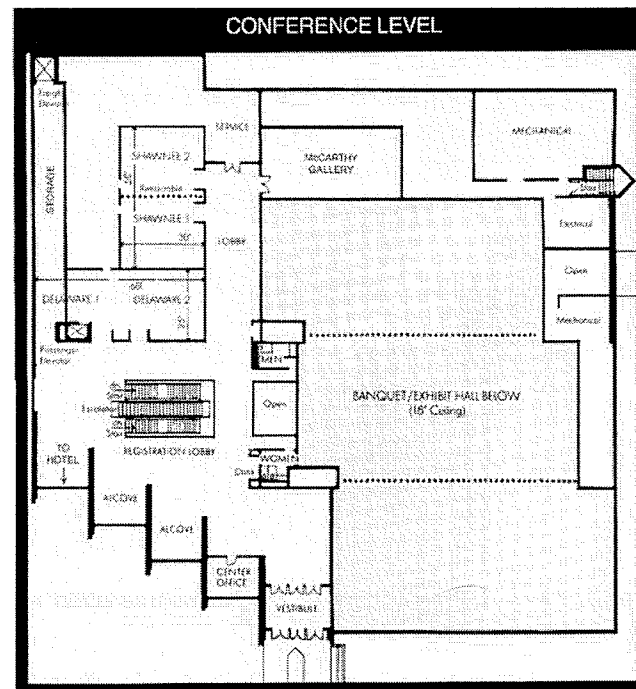
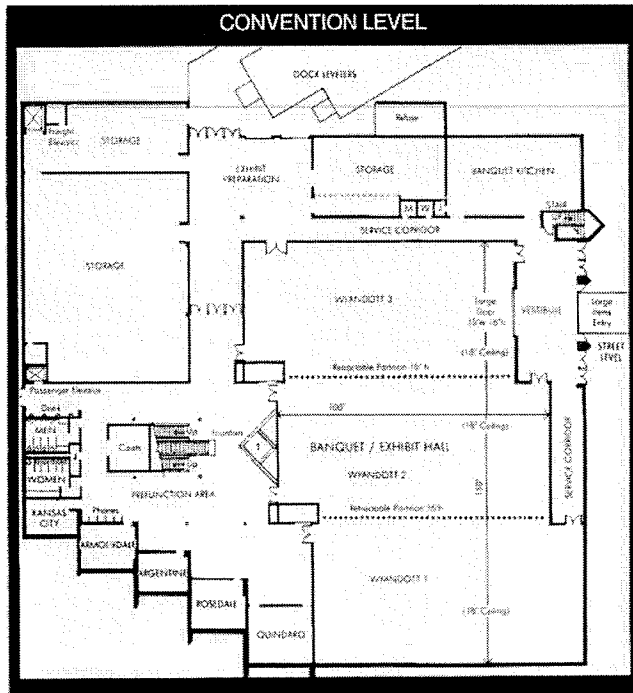
LOCATION

**Hilton Garden Inn Hotel
Reardon Convention Center
520 Minnesota Avenue
Kansas City, Kansas, 66101**

From the East: I-70 West to U.S. 24 / Exit 423C (Minnesota Ave)

From the West: I-70 East to 5th Street going North. Continue to Minnesota Ave.

From the KCI airport: I-29 South to I-70 West to U.S. 24 Exit 423C (Minnesota Ave)



The exhibits will be located in Wyandott 2 which will be open to Wyandott 3 where all plenary sessions and meals will take place.

Exhibit Details

2004 Mid-America Conference
Sunday, May 2nd – Tuesday, May 4th

EXHIBIT SCHEDULE

A full schedule is provided online at http://www.afpkc.org/AFP/MAC_Info.pdf.

Sunday, May 2nd

Exhibit set-up: Noon – 4:00 pm*

Conference registration: 2:00 pm – 6:00 pm

Exhibit opportunity: 4:00 pm – 6:30 pm

**All exhibits must be set-up and staffed by 4:00 pm, however, participants may begin arriving and registering as early as 2:00 pm so it would be advantageous to be set-up and ready by 2:00 pm on Sunday the 2nd.*

Monday, May 3rd

Continental breakfast with exhibitors: 8:00 am – 8:45 am

Break with exhibitors: 10:00 am – 10:45 am

Lunch buffet / Roundtable discussions: 12:15 pm – 1:45 pm

Break with exhibitors: 3:30 pm – 3:45 pm

Optional special events: 6:00 pm - ?

Tuesday, May 4th

Continental breakfast with exhibitors: 8:00 am – 8:45 am

Exhibit opportunity: 11:30 am – Noon

Lunch buffet: Noon – 2:00 pm

Conference concludes: 2:00 pm

Exhibit tear down: 2:10 pm – 4:00 pm

MEALS & SPECIAL EVENTS

Conference exhibitors are invited to join participants in the continental breakfast and lunch buffet on Monday and Tuesday. This benefit is included in the cost of your vendor registration.

At 6:00 pm on Monday evening, May 3rd, two special events will take place. If you choose to participate, you will need to complete the conference registration form found at http://www.afpkc.org/AFP/MAC_Registration.pdf (write exhibitor next to your name so the office understands you are not a conference participant) and send the proper payment.

City of Fountains Tour (\$25 per person)

Kansas City has more fountains than any city in the world but Rome. Join us on this tour that combines Kansas City's beautiful fountains and mouthwatering cuisine! You will board a chartered bus to network with other development professionals. Enjoy dinner from one of Kansas City's outstanding restaurants while experiencing a guided tour of 30 famous fountains throughout the city. The evening will culminate with dessert on the Country Club Plaza. A minimum of 40

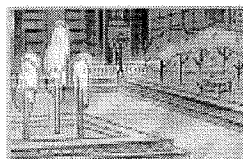


Exhibit Details

2004 Mid-America Conference
Sunday, May 2nd – Tuesday, May 4th

EXHIBIT BOOTH

The following items come with each exhibit registration:

- 10' x 10' piped and draped booth
- 8' draped table
- two chairs
- wastebasket
- identification sign
- contact information for *all* conference participants
- listing as exhibitor in the conference program with organizational information provided
- breakfast and lunch on May 3 & 4

The following items may be obtained for an additional cost by contacting either exhibit co-chair:

- electrical outlet - \$25
- telephone line - \$25
- additional table/double booth - \$150

DOOR PRIZES / DRAWINGS

A general drawing will take place on Tuesday, May 4th. We encourage everyone to participate by donating a door prize and plan on collecting donated items during set-up on Sunday, May 2nd.

If you wish to conduct your own drawing at your booth, please feel free to and we will gladly announce the winner during the announcement of the general drawing winners unless you prefer otherwise.

CONTACT INFORMATION

Exhibit Questions

If you have any questions regarding exhibiting at the 2004 Mid-America Conference, please contact either exhibit co-chair:

Allison Abplanalp
785.845.3554
allison@kac.org

Cathy Boyer-Shesol
913.341.6200 x16
cboyershesol@mwdg.org

Payment and Registration

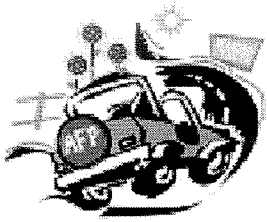
All payments and registration forms of any kind should be sent to the chapter office at:

AFP Mid-America Chapter
PO Box 32101

FAX: (913) 422-2082

*Discovering New Roads
in Fundraising*

Exhibit Details



2004 Mid-America Conference
Sunday, May 2nd - Tuesday, May 4th

Reardon Convention Center
520 Minnesota Avenue
Kansas City, Kansas
913.342.7900

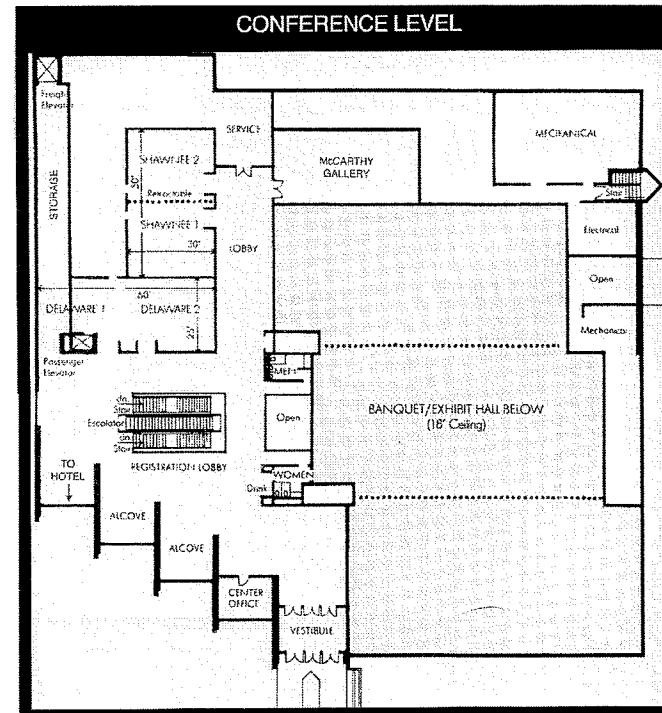
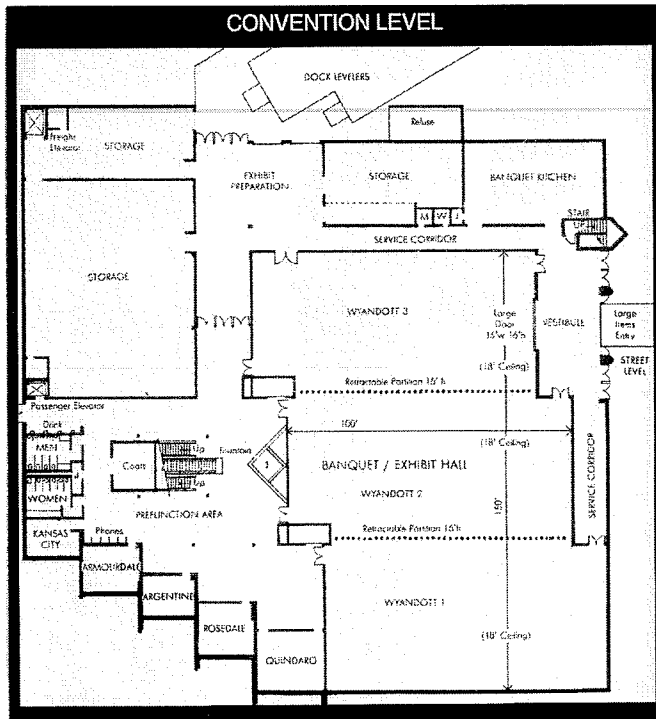
LOCATION

Hilton Garden Inn Hotel
Reardon Convention Center
520 Minnesota Avenue
Kansas City, Kansas, 66101

From the East: I-70 West to U.S. 24 / Exit 423C (Minnesota Ave)

From the West: I-70 East to 5th Street going North. Continue to Minnesota Ave.

From the KCI airport: I-29 South to I-70 West to U.S. 24 Exit 423C (Minnesota Ave)



The exhibits will be located in Wyandott 2 which will be open to Wyandott 3 where all plenary sessions and meals will take place.

Exhibit Details

2004 Mid-America Conference
Sunday, May 2nd - Tuesday, May 4th

EXHIBIT SCHEDULE

A full schedule is provided online at http://www.afpkc.org/AFP/MAC_Info.pdf.

Sunday, May 2nd

Exhibit set-up: Noon - 4:00 pm*

Conference registration: 2:00 pm - 6:00 pm

Exhibit opportunity: 4:00 pm - 6:30 pm

**All exhibits must be set-up and staffed by 4:00 pm, however, participants may begin arriving and registering as early as 2:00 pm so it would be advantageous to be set-up and ready by 2:00 pm on Sunday the 2nd.*

Monday, May 3rd

Continental breakfast with exhibitors: 8:00 am - 8:45 am

Break with exhibitors: 10:00 am - 10:45 am

Lunch buffet / Roundtable discussions: 12:15 pm - 1:45 pm

Break with exhibitors: 3:30 pm - 3:45 pm

Optional special events: 6:00 pm - ?

Tuesday, May 4th

Continental breakfast with exhibitors: 8:00 am - 8:45 am

Exhibit opportunity: 11:30 am - Noon

Lunch buffet: Noon - 2:00 pm

Conference concludes: 2:00 pm

Exhibit tear down: 2:10 pm - 4:00 pm

MEALS & SPECIAL EVENTS

Conference exhibitors are invited to join participants in the continental breakfast and lunch buffet on Monday and Tuesday. This benefit is included in the cost of your vendor registration.

At 6:00 pm on Monday evening, May 3rd, two special events will take place. If you choose to participate, you will need to complete the conference registration form found at http://www.afpkc.org/AFP/MAC_Registration.pdf (write exhibitor next to your name so the office understands you are not a conference participant) and send the proper payment.

City of Fountains Tour (\$25 per person)

Kansas City has more fountains than any city in the world but Rome. Join us on this tour that combines Kansas City's beautiful fountains and mouthwatering cuisine! You will board a chartered bus to network with other development professionals. Enjoy dinner from one of Kansas City's outstanding restaurants while experiencing a guided tour of 30 famous fountains throughout the city. The evening will culminate with dessert on the Country Club Plaza. A minimum of 40

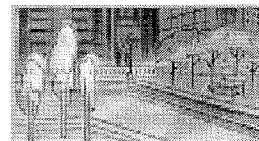


Exhibit Details

2004 Mid-America Conference
Sunday, May 2nd - Tuesday, May 4th

EXHIBIT BOOTH

The following items come with each exhibit registration:

- 10' x 10' piped and draped booth
- 8' draped table
- two chairs
- wastebasket
- identification sign
- contact information for *all* conference participants
- listing as exhibitor in the conference program with organizational information provided
- breakfast and lunch on May 3 & 4

The following items may be obtained for an additional cost by contacting either exhibit co-chair:

- electrical outlet - \$25
- telephone line - \$25
- additional table/double booth - \$150

DOOR PRIZES / DRAWINGS

A general drawing will take place on Tuesday, May 4th. We encourage everyone to participate by donating a door prize and plan on collecting donated items during set-up on Sunday, May 2nd.

If you wish to conduct your own drawing at your booth, please feel free to and we will gladly announce the winner during the announcement of the general drawing winners unless you prefer otherwise.

CONTACT INFORMATION

Exhibit Questions

If you have any questions regarding exhibiting at the 2004 Mid-America Conference, please contact either exhibit co-chair:

Allison Abplanalp
785.845.3554
allison@kac.org

Cathy Boyer-Shesol
913.341.6200 x16
cboyershesol@mwdg.org

Payment and Registration

All payments and registration forms of any kind should be sent to the chapter office at:

AFP Mid-America Chapter
PO Box 32101

FAX: (913) 422-2082